

MONTHLY MEMBERSHIP PROGRESS REPORT

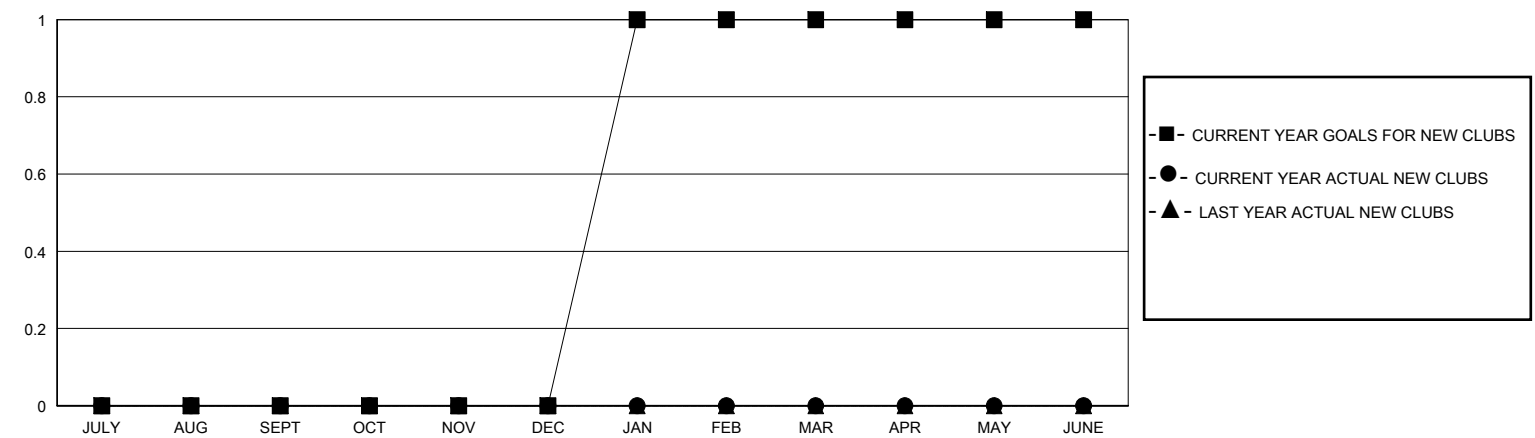
District 1 BK

Results as of: 4/30/2025

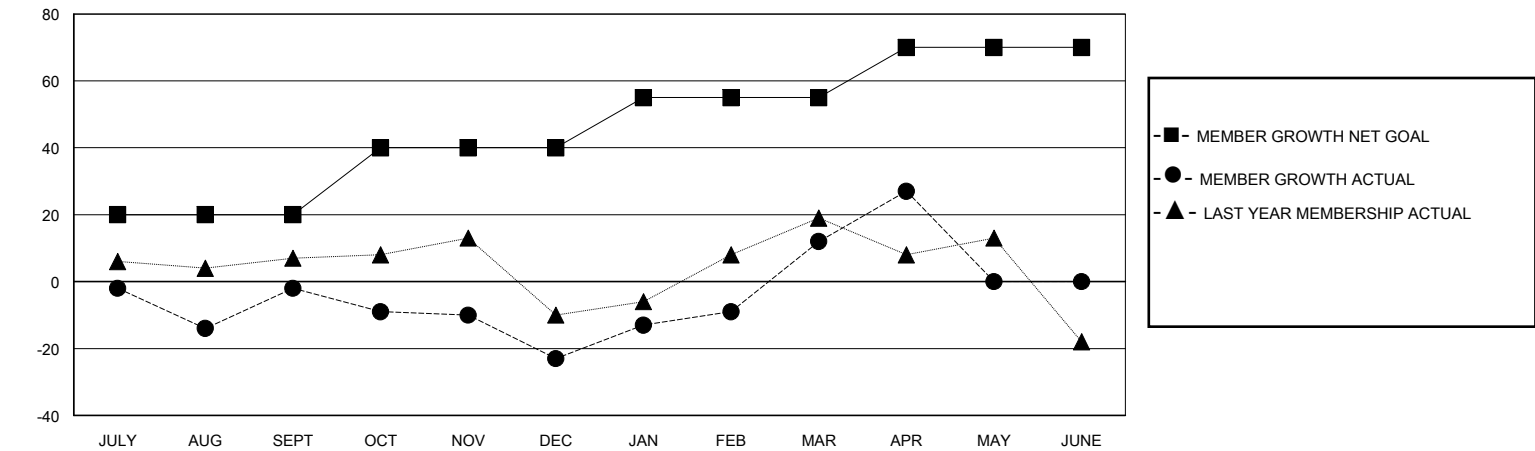
| GMT: LOCATION ILLINOIS GMT CA | | | |
|-------------------------------|---------------|-----------|---------------|
| Clubs | | | |
| RESULTS FOR 2024-2025 | | | |
| QUARTER | NEW CLUB GOAL | NEW CLUBS | DROPPED CLUBS |
| JULY/AUG/SEPT | 0 | 0 | 0 |
| OCT/NOV/DEC | 0 | 0 | 0 |
| JAN/FEB/MAR | 1 | 0 | 0 |
| APR/MAY/JUNE | 0 | 0 | 0 |

| Members | | | |
|-----------------------|------------------------|----------------------|----------------------------------------------|
| RESULTS FOR 2024-2025 | | | |
| QUARTER | MEMBER GROWTH NET GOAL | MEMBER GROWTH ACTUAL | DROPPED MEMBERS ACTUAL (including transfers) |
| JULY/AUG/SEPT | 20 | 31 | 30 |
| OCT/NOV/DEC | 20 | 23 | 41 |
| JAN/FEB/MAR | 15 | 68 | 27 |
| APR/MAY/JUNE | 15 | 24 | 5 |

GOALS AND ACTUAL NEW CLUBS CUMULATIVE



GOALS AND ACTUAL MEMBERS CUMULATIVE



| | | | | |
|------------------------|-----|-----------------------------------------------------------|-----------------------------------|----------------|
| DROPPED CLUBS: 0 | | 39 CLUBS OF 59 ADDED 1 OR MORE NEW MEMBERS | <u>GENDER DISTRIBUTION</u> | |
| | | | MALE | 1,293 (72.52%) |
| | | | FEMALE | 488 (27.37%) |
| <u>DROPPED MEMBERS</u> | | CLICK HERE FOR CUMULATIVE MEMBERSHIP DATA | | |
| DECEASED | 14 | | TOTAL FAMILY UNIT MEMBERS 0 | |
| CLUB CANCELLED | 0 | | | |
| OTHER | 89 | | FAMILY MEMBERS PAYING HALF DUES 0 | |
| TOTAL | 103 | | | |